



Customer: CBD Plus USA
Customer Sample ID: Colorado Cures - CBD Salve 500mg
Laboratory Number: 20E0201-03
Servings per Container: 113.40



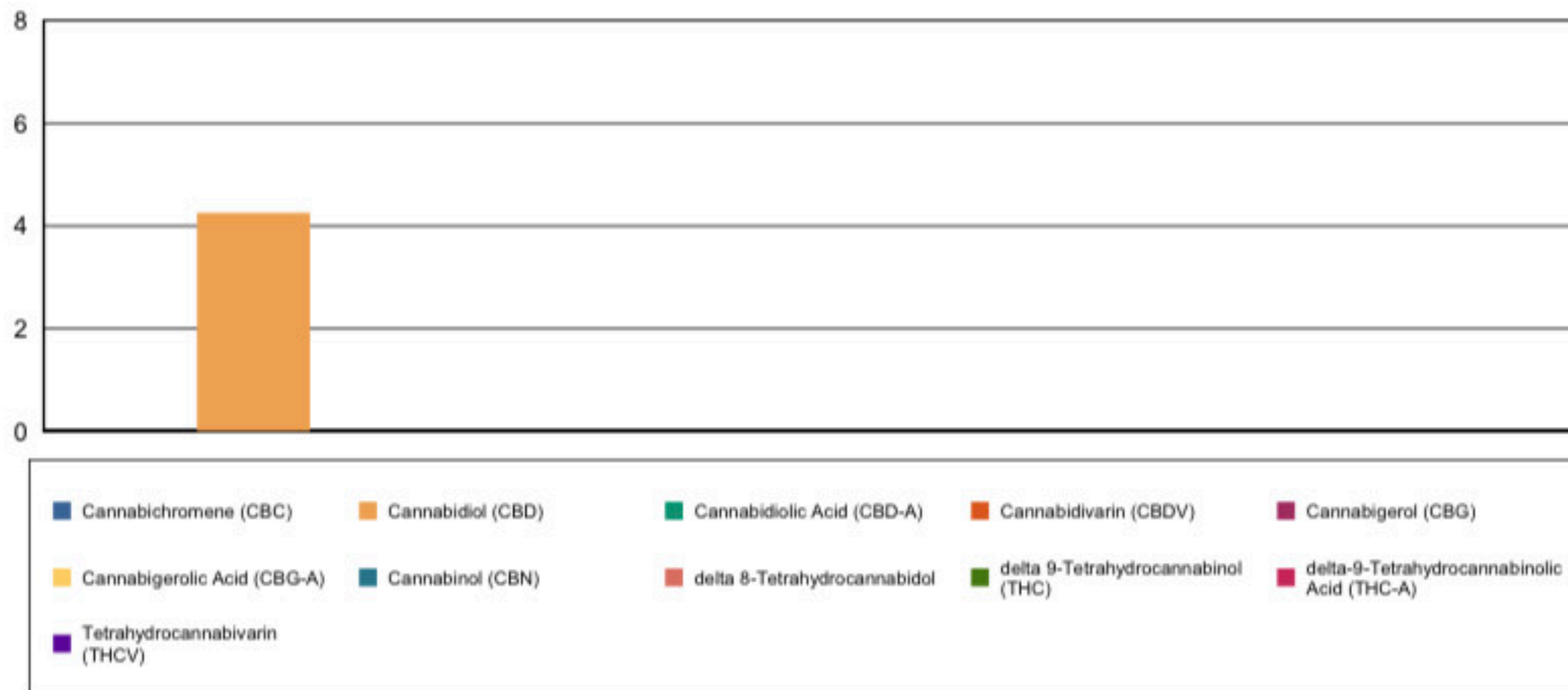
Cannabinoid Profile

Extraction Technician: DF
Analytical Chemist: CB

Extraction Date(s)	Analysis Date(s)
5/26/2020	5/26/2020

Cannabinoids (HPLC)		Results		
	LOD (mg/g)	%	mg/g	mg/Container
Cannabidivarin (CBDV)	<0.050			
Cannabidiolic Acid (CBD-A)	<0.050			
Cannabigerolic Acid (CBG-A)	<0.050			
Cannabigerol (CBG)	<0.050			
Cannabidiol (CBD)		0.43	4.25	482
Tetrahydrocannabivarin (THCV)	<0.050			
Cannabinol (CBN)	<0.050			
delta 9-Tetrahydrocannabinol (THC)	<0.050			
delta 8-Tetrahydrocannabidol	<0.050			
Cannabichromene (CBC)	<0.050			
delta-9-Tetrahydrocannabinolic Acid (THC-A)	<0.050			
Cannabinoids Total		%	mg/g	
Max Active THC		0.00	0.00	
Max Active CBD		0.43	4.25	
T.Active Cannabinoids		0.43	4.25	
Total Cannabinoids		0.43	4.25	
Ratios				
NA:1 CBD to THC		0.00:1 THC to CBD		

Cannabinoid (mg/g)



Reporting Limits will vary based on sample extraction weight used for the analysis.

Altitude Consulting, LLC utilizes NIST traceable Reference Standards and Certified Reference Material to calibrate analytical instruments along with proven analytical methods. The methods are applied in the most ethical manner following good laboratory practice guidelines. The results of this report are based solely on the sample submitted and cannot be reproduced.